

June 2019 | Vol. 6 | Issue 62 | ₹200

# DESIGN detail

the architecture magazine

**ON  
THE  
ROCKS**

SNØHETTA

**ROOFING  
SPECIAL**

**HONOURING THE  
BYGONE  
HEROES**

RAJ REWAL ASSOCIATES

# editorial

In the sad demise of Ar I M Pei, the architecture world has lost one of its most prominent figures of 20th-century modernism. Best known for his powerful use of geometric patterns, Ar Pei built refreshingly innovative forms with innately complex designs: works like Hong Kong's Bank of China Tower and the National Gallery of Art's East Wing.

Even though he charmed the world with his gentle persona and endearing smile, critics never were easy on him. From the John F. Kennedy Presidential Library and Museum in Boston to the now iconic Glass Pyramid at Louvre, he has been criticized for his bold and futuristic designs. And the reason: he was too modern for his times. However, his death remains a great loss for the architecture world and he will be missed immensely.



Coming to this month's projects, we feature some built forms which dare to take un-trodden paths.

This month we focus on roofs or the fifth plane that are hardly given any importance other than for their practical purpose. The neglect may have risen from the thought that it is that part of the building which would protect its inhabitants from the elements. But I would dare say that roofing is also a part of the aesthetic requirements of a built structure. It was and continues to remain a major part of the vernacular architecture even though designs may have varied according to the climate of the region, available building materials and the cultural context.

With the modernization of architecture, technology has overpowered materials and products have been transformed from handmade to machine-made, resulting

in a big change in architectural styles. As a result, architects are now thinking beyond repeated procedures and are daring to experiment.

The projects that we feature under the roofing special section combine innovation and traditional techniques to create built forms that easily adapt to its surroundings. The pitched roofs by Wallmakers and the vaulted timber technique used by Peter Rich Architects not only add to the aesthetic quotient of the buildings but also easily blend with their natural settings.

Our cover story, the half-sunken restaurant Under by Snøhetta is an extraordinary project. It takes the word fine dining to the next level as the patrons get to witness what happens below the waves while enjoying their food. Construction work in an inhospitable environment is not an easy task and the team of architects at Snøhetta achieved it with flying colours.

The Bentway by PUBLIC WORKS and the bungalow refurbishment by Studio Sher show that a little imagination can change the whole idea of spaces. As the former shows the need for infrastructural re-use to support public life, the latter is a great example of sustainability.

Architect **KARAN GROVER**  
Chief Editor



## THE ALLURE OF IMPERFECTION

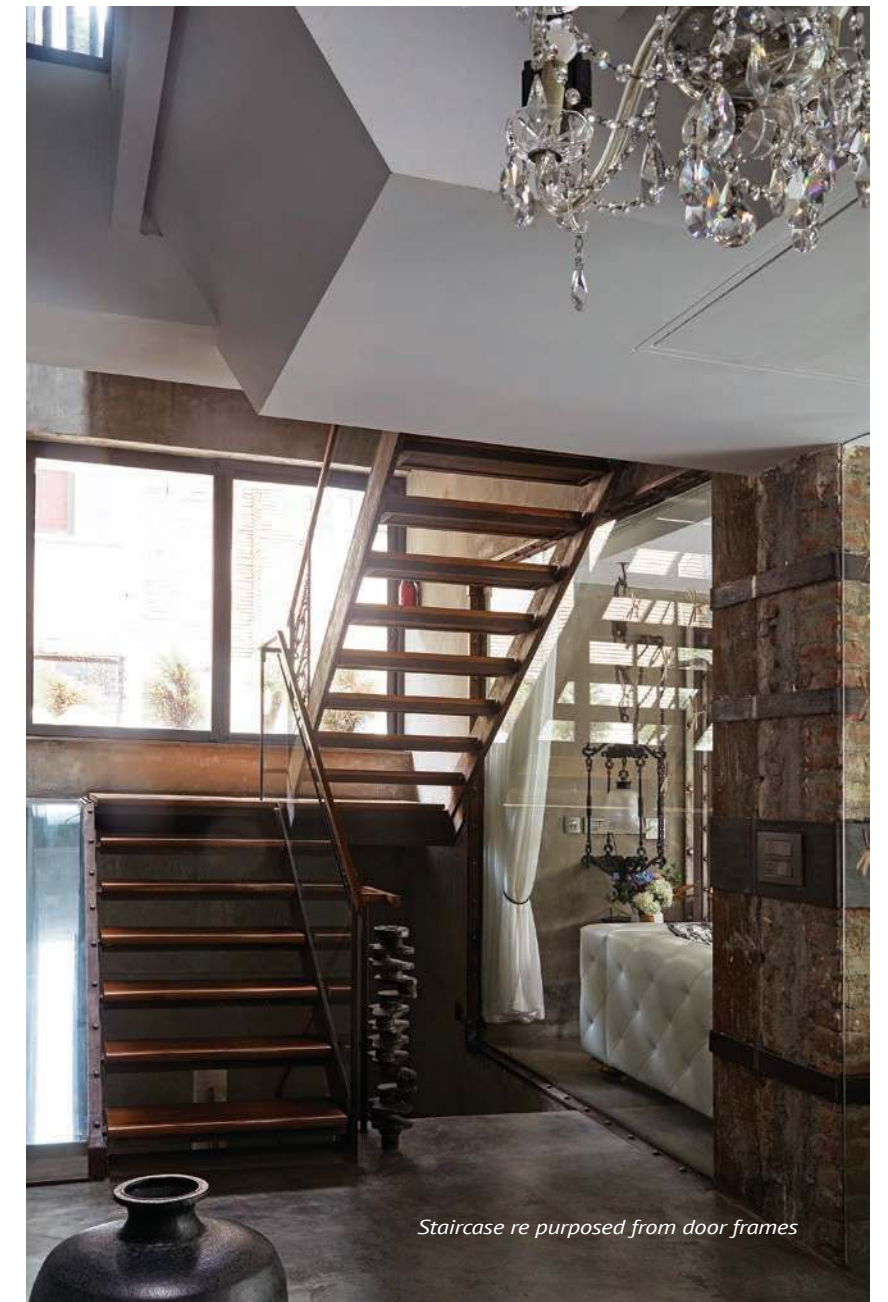
*Text : Team Design Detail / Photos : Sushant Sinha*

The bungalow refurbishment project in South Delhi breaks new ground by incorporating state of the art techniques for energy efficiency while also uncovering new methods of upcycling. The residential bungalow was built in 1982 and over the years, it has undergone many alterations to suit the demands of the growing family. When the client's son decided to permanently return to India after working abroad for over a decade, they decided to revamp the bungalow. The project was conceptualized in 2014 and completed in 2018.

The client's brief to the architect was that the bungalow should reflect their outlook and future aspirations with a hint of nostalgia. The architect wanted the new house to be a fresh start for the family, a haven where the long disjointed family can replenish their personal connections. The design process was highly collaborative from the very beginning and this helped the architect to experiment and manifest his ideas fully. Due to this, planning was open, helping the interiors to be spacious and roomy. The ground floor was retained with minimal design interventions considering the memories that must be connected with the place. The first and second levels were replanned and a third level was added.



Living Room furnished with certain elements bought from scrap yard



Staircase re purposed from door frames



Dining table made from old railway sleepers

This was also an opportunity for the architect to devise design interventions for energy efficiency. Considering the sun path is slanted towards the South in this region, he made sure the south facing part of the building were composed of powder room, storage etc and the windows were given with wooden shutters and overhangs to avert direct glare falling on the panes. The wind direction is from the south-eastern side and the openings were oriented accordingly to provide passive ventilation.

In order to maximize daylight ingress, the Northern side is glazed and there is a still in the roof allowing for a triple height light well. Every level has one open space



AR ROHIN SHER

## STUDIO SHER

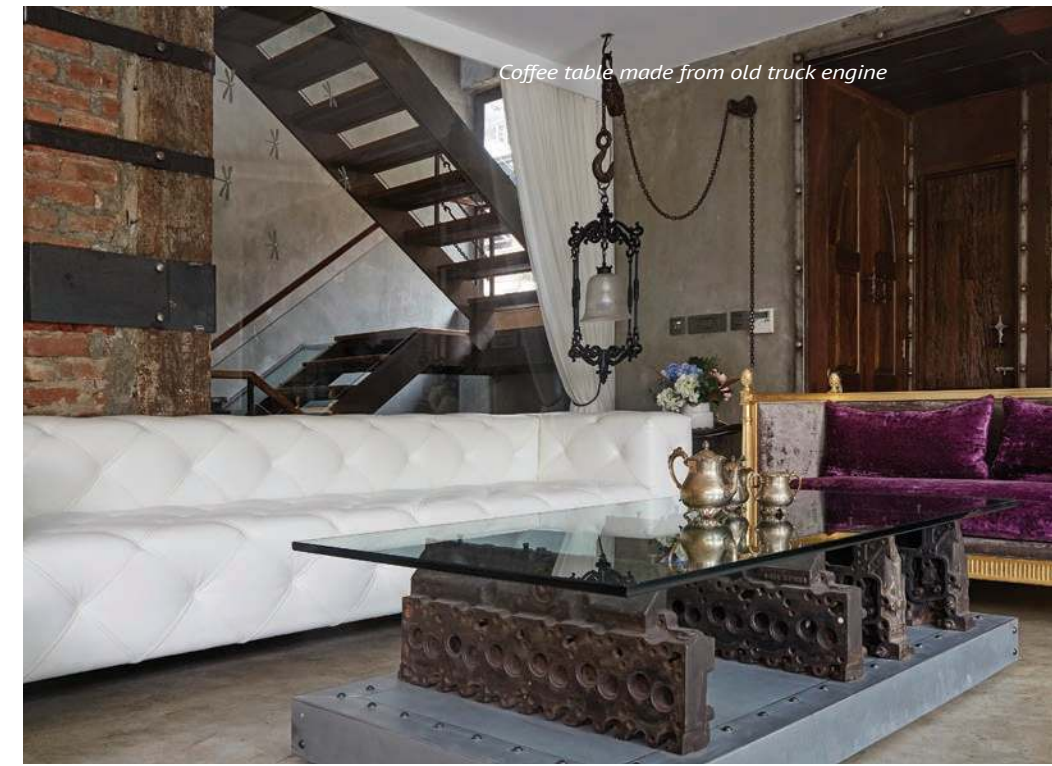
Studio Sher is a Delhi based firm helmed by architect Rohin Sher. Passionate towards building sciences since his youth, Rohin Sher pursued B.Arch in CEPT University after doing his Building Construction Technology course in the same University. While studying at CEPT he was selected for a 6 month long exchange program at Zurich University of Applied Sciences which gave him an opportunity to travel to Europe and enrich his experience. He further pursued a Master's Degree in Sustainable Environmental design at Architectural Association School of Architecture in London. After graduation he found his consultancy firm in London which provided environmental design advice to Architects and Engineers, builders etc. After working as a consultant for some years, he came to India and joined Delhi based firm Morphogenesis as an architect and subsequently found his own architecture firm. His vast experience and devout perseverance in the field of sustainability and energy efficiency in architecture sets Studio Sher apart.

Artificial grass at the roof garden



or a garden. The garden has tall shrubs on both sides for privacy. Many upcycled elements have been incorporated in the design scheme. Some of them sourced from the site (reinforcement bars, plumbing pipes and doors). Other materials were obtained from the scrap yard like the old truck engine used to make the coffee table. The dining table is made of wooden sleepers from obsolete railway tracks.

In order to unify the weathered textures of the upcycled materials, the architect has left a lot of the surfaces unfinished or given new unconventional finishes like rough plastered walls, rusted steel plates etc. In order to support the new level, steel columns have been inserted into the layout. They are attached to the wall using brackets.



Coffee table made from old truck engine



Ledge from re-claimed reinforcement bars and plumbing pipes



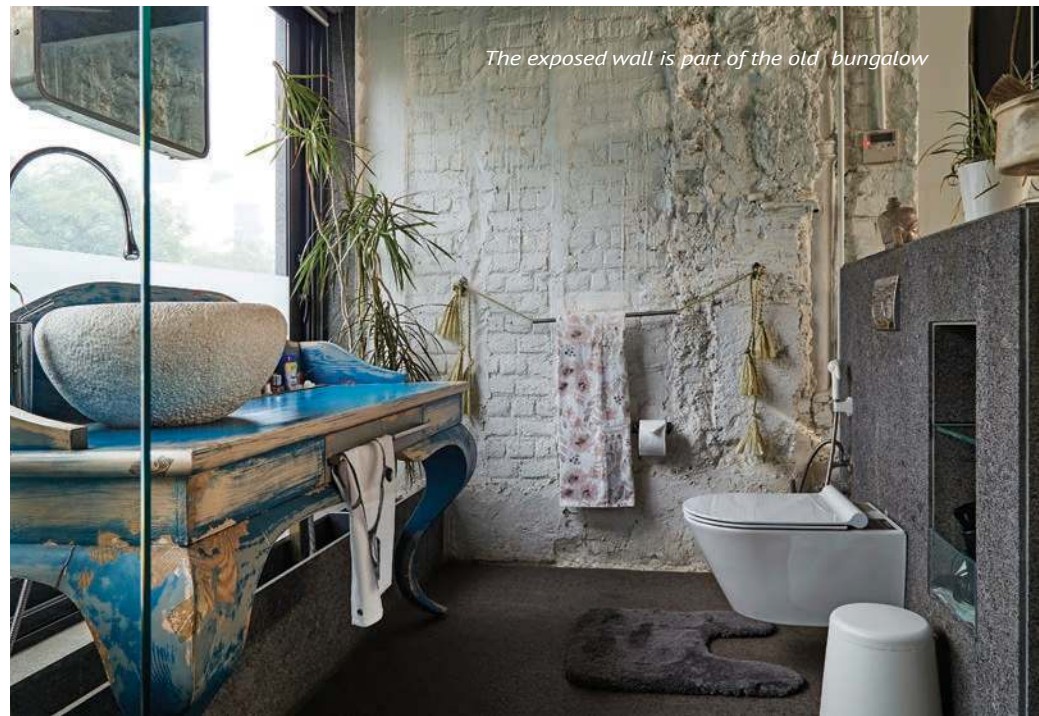
Guest bedroom with rough plastered walls



Bedroom with niche space

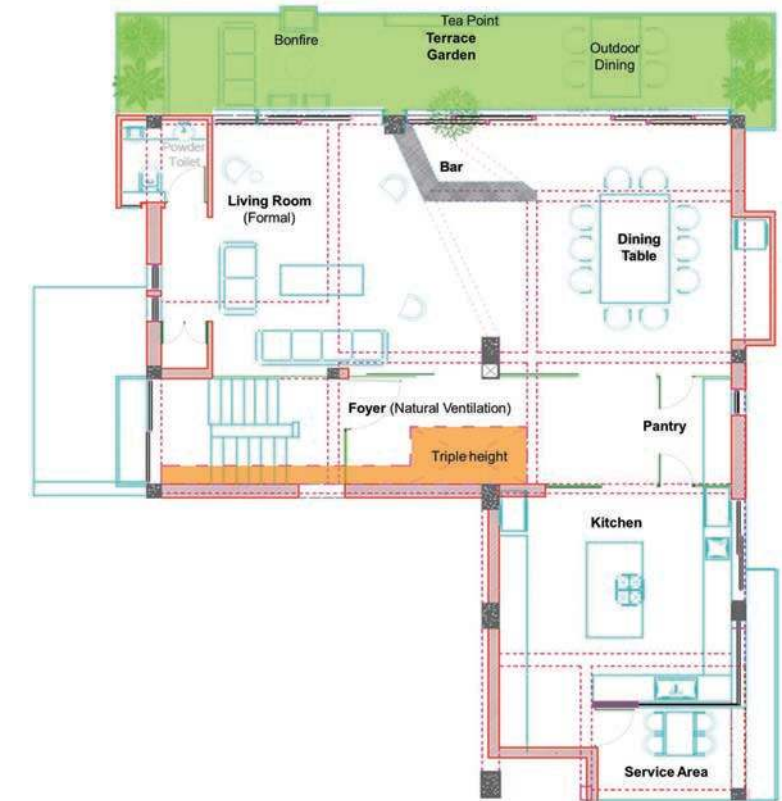
**FACT FILE**

PROJECT TITLE : RESIDENTIAL REFURBISHMENT IN  
 LOCATION : KALKAJI, NEW DELHI  
 PRACTICE : STUDIO SHER  
 TYPOLOGY : REFURBISHMENT  
 PRINCIPAL ARCHITECT : ROHIN SHER  
 INTERIOR DESIGN TEAM : ROHIN SHER, TUSHA GUPTA, SOHAM DOSHI  
 AREA : 5500 SQ. FT  
 YEAR : 2018



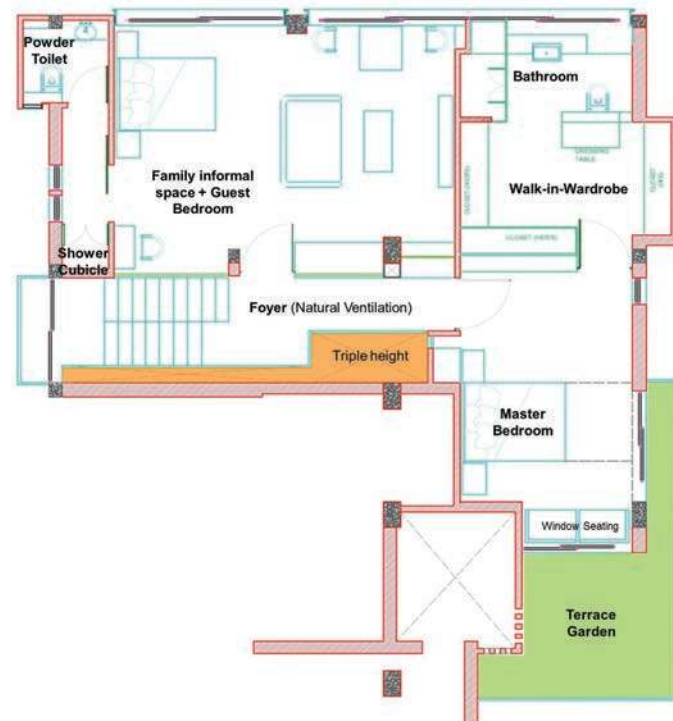
**Proposed Space Planning : 1<sup>st</sup> Floor**

At least one open space / terrace garden is provided on each floor



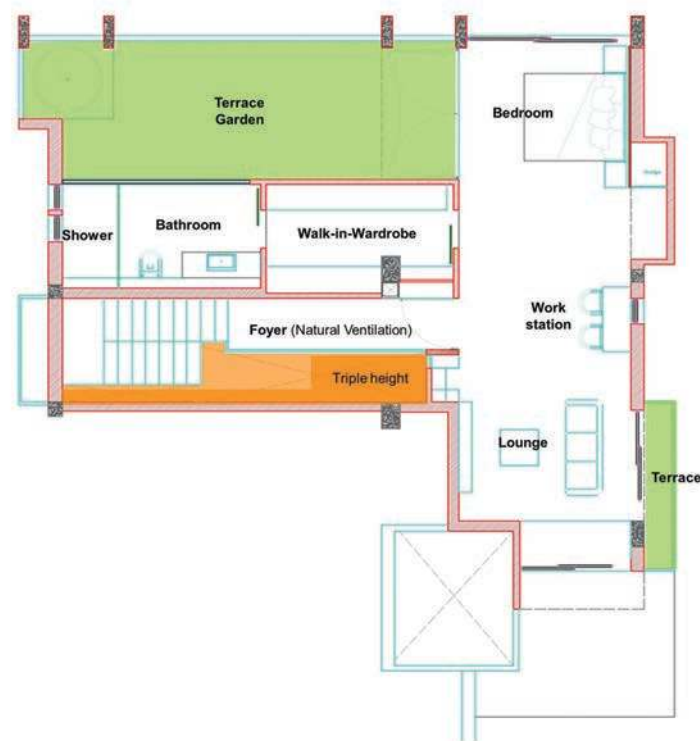
## Proposed Space Planning : 2<sup>nd</sup> Floor

At least one open space / terrace garden is provided on each floor



## Proposed Space Planning : 3<sup>rd</sup> Floor

At least one open space / terrace garden is provided on each floor



*Old machine part is reinterpreted as pedestal*



Overall, the design scheme celebrates the beauty of blemishes and imperfections. The impeccable detailing and the seamless integration of the eclectic design choices are all pointers to how much the architect researched and contemplated over the project. Due to this there is an unparalleled timeless beauty reflected in the spaces.

dd